



MACHINERY



TOOLING



AUTOMATION



brother
Matsura

Nidec
TAKISAWA

CUTTING TOOLS



WORLD LEADER IN CUTTING TOOLS

Threading-Drilling-Milling-Indexable

- ➔ From Light Production to High Production
- ➔ Easy or Difficult to Machine Materials
- ➔ A Cutting Tool for Every Application



LEADING EDGE PERFORMANCE

Extensive Line-up of Turning, Milling, and Drilling Products

- ➔ Various Grades Various Dimensions and Chip Breakers
- ➔ Fully Supporting the Machining Needs of Customers in a Wide Variety of Industries



AMERICA'S MOST POPULAR — FULL LINE CUTTING TOOLS

Hole-making and Finishing Tooling Systems

- ➔ Drilling
- ➔ Boring
- ➔ Reaming
- ➔ Turning
- ➔ Tapping
- ➔ Custom Tooling



HIGH PERFORMANCE CUTTING TOOLS

- ➔ Facing Tools
- ➔ Heads
- ➔ Grooving Tools
- ➔ Tool Inserts
- ➔ Milling Cutters
- ➔ Indexable
- ➔ Solid Carbide
- ➔ Drilling
- ➔ Reaming
- ➔ Milling
- ➔ Engraving



LEADERS IN HOLE MAKING TECHNOLOGY

- ➔ Hole-making and finishing systems
- ➔ Drilling
- ➔ Boring
- ➔ Reaming
- ➔ Threading
- ➔ Burnishing
- ➔ Custom Tooling



CRAZY MIKRON TOOL QUALITY

- ➔ Smallest Flexible carbide drill with integrated cooling
- ➔ Flexibility deep hole drilling



UNIMAX CARBIDE END MILLS

- ➔ Excellent Performance in High Speed Milling
- ➔ Extensive Product Line Starts With Micro Diameters



HIGH QUALITY COST EFFECTIVE TAPPING TOOLS FOR EVERY MATERIAL

EXCLUSIVELY AVAILABLE



INNOVATE CUSTOM TOOLING SOLUTIONS

- ➔ Reaming ➔ Fine boring ➔ Drilling
- ➔ Boring ➔ Countersinking ➔ Milling
- ➔ Turning ➔ Clamping ➔ Actuating
- ➔ Setting ➔ Measuring ➔ Dispensing
- ➔ NC and CNC Multi Heads



EXPANDING YOUR TOOLING POSSIBILITIES

- ➔ Custom Mill & Lathe Carbide Tools
- ➔ Dovetail Cutters
- ➔ Engraving



YAMAZEN INC.

111 Northwest Point Boulevard

Elk Grove Village, IL 60007

800-228-2969

toolingsupport@yamazen.com

NATIONAL SUPPORT AND TECHNICAL CENTERS:

Chicago ♦ Milwaukee ♦ Indianapolis ♦ Cleveland ♦ Cincinnati

Detroit ♦ Hartford ♦ Knoxville ♦ Los Angeles ♦ Atlanta

Dallas ♦ Phoenix ♦ Fort Myers ♦ Philadelphia



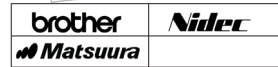
MACHINERY



TOOLING



AUTOMATION

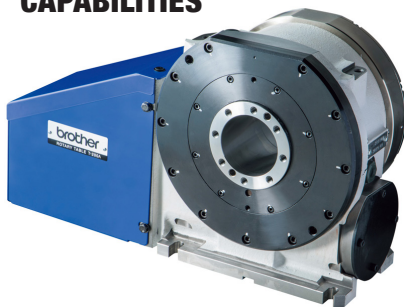


ROTARY TABLES



brother

SPEEDIO T-200A Rotary Table
ENHANCE YOUR *SPEEDIO* CAPABILITIES



FAST AND RELIABLE PERFORMANCE



Roller Gear Cam Mechanism

YUKIWA

BROTHER *SPEEDIO* COMPATIBLE ROTARY TABLES

Multi-Axis Tables
Production Performance



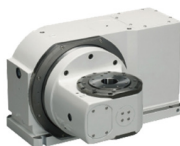
DIRECT DRIVE ROTARY TABLE



CNC TILTING ROTARY TABLE



ROLLER GEAR DRIVE ROTARY TABLES



RT SERIES

Open-End Design, Compact, High-Speed, exceptional Position Accuracy, and Repeatability. Good for Complex Shapes.



TWA AND TBS SERIES

High Speed Tilting Ball Drive Rotary Table



INDUSTRY LEADING MULTI-AXIS TABLES PRODUCTION READY

brother *SPEEDIO* compatible Rotary Tables



5AX-TILT TABLES



MULTI-SPINDLE

YAMAZEN INC.

111 Northwest Point Boulevard
Elk Grove Village, IL 60007

800-228-2969

toolingsupport@yamzen.com

NATIONAL SUPPORT AND TECHNICAL CENTERS:

Chicago ♦ Milwaukee ♦ Indianapolis ♦ Cleveland ♦ Cincinnati
Detroit ♦ Hartford ♦ Knoxville ♦ Los Angeles ♦ Atlanta
Dallas ♦ Phoenix ♦ Fort Myers ♦ Philadelphia



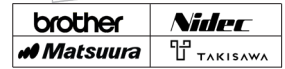
MACHINERY



TOOLING



AUTOMATION



TOOL HOLDING



HIGH PRODUCTIVITY ADVANCE TOOLHOLDERS



- ➔ Precision Tool Holders
- ➔ High Precision SK Collet Holder
- ➔ Taper Plus Holder
- ➔ End Mill Holders
- ➔ High-Performance Milling Chuck
- ➔ Most Accurate and Precision Collet



AMERICA'S MOST POPULAR FULL LINE TOOLING MANUFACTURER



- ➔ Reaming
- ➔ Fine boring
- ➔ Drilling
- ➔ Boring
- ➔ Countersinking
- ➔ Milling
- ➔ Turning
- ➔ Clamping
- ➔ Actuating



COST EFFECTIVE ER COLLET HOLDERS - MEVIUS SERIES



- ➔ Superior Clamping and Gripping Force
- ➔ High Accuracy $4d+0.0002$!
- ➔ Rust Proof Black Coating



SLIMLINE SHRINK-FIT HOLDER PROVIDES THE PERFECT SOLUTION



- ➔ SLIMLINE Shrink-Fit Holders
- ➔ No Over Heating
- ➔ Strong Clamping Force
- ➔ High Rigidity and Superior Accuracy!



HIGH PERFORMANCE TOOL HOLDERS ORIGINAL "BIG-PLUS" TECHNOLOGY



- ➔ Increased Rigidity
- ➔ Reduced Runout
- ➔ Greater Accuracy
- ➔ Longer Tool Life



WORLD LEADERS IN:



- ➔ Innovative Ultra-Precision Tool Holding
- ➔ Shrink Tooling Systems Tool Setting
- ➔ Balancing Systems
- ➔ Performance Cutting Tools



SUPERIOR TOOL CLAMPING COLLET SYSTEMS

for milling / drilling / tapping
/ reaming / finishing



INNOVATIVE HYDRAULIC EXPANSION TECHNOLOGY



- ➔ Highest performing hydraulic tool holder
- ➔ Excellent vibration damping
- ➔ Direct clamping



TURNING HOLDERS



- ➔ Static Precision Toolholders
- ➔ Quick Change System
- ➔ Broaching Unit for Keyways and Splines
- ➔ Gera Hobbing Unit
- ➔ Power Skiving Unit



PRECISION LIVE AND STATIC TOOLING FOR TURNING



- ➔ Adj. Angle tool holders
- ➔ Boring Bar Holders
- ➔ Broaching/ Slotting
- ➔ Reduced Runout
- ➔ Gear Hobbers
- ➔ Driven Tool Holders

YAMAZEN INC.

111 Northwest Point Boulevard
Elk Grove Village, IL 60007

800-228-2969

toolingsupport@yamzen.com

NATIONAL SUPPORT AND TECHNICAL CENTERS:
Chicago ♦ Milwaukee ♦ Indianapolis ♦ Cleveland ♦ Cincinnati
Detroit ♦ Hartford ♦ Knoxville ♦ Los Angeles ♦ Atlanta
Dallas ♦ Phoenix ♦ Fort Myers ♦ Philadelphia



MACHINERY



TOOLING



AUTOMATION



ENVIRONMENTAL MANAGEMENT & COOLANT SYSTEMS:



MIST COLLECTORS

- ➔ High Performance
- ➔ Filter and Filter-less Model
- ➔ Designed to Suit Many Needs



CENTRAL SYSTEM MIST COLLECTORS

- ➔ 3 in 1 Solutions for Mist Applications
- ➔ Configurations for Ducted Central Systems
- ➔ UL-Approved Electrical components
- ➔ Quiet Operation

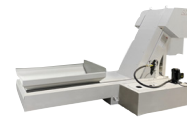


HIGH PRESSURE CTS PUMP

Filter Pump Kit Module for **brother**
SPEEDIO Series



- ➔ High Pressure CTS Systems
- ➔ Bar Feeders
- ➔ High Pressure
- ➔ Mist Collectors
- ➔ Chip Conveyors
- ➔ Coolant Management



INDUSTRY LEADING COOLANT AND CHIP MANAGEMENT

- ➔ Chip Conveyors
- ➔ Advanced Filtration Systems
- ➔ Chip Processing and Removal Solutions



INNOVATIVE DESIGN

- ➔ Mist and Smoke Collection
- ➔ High-Pressure Coolant
- ➔ Fluid Chillers
- ➔ Chip & Sludge Removal



HIGH PRESSURE CTS



YAMAZEN INC.

111 Northwest Point Boulevard

Elk Grove Village, IL 60007

800-228-2969

toolingsupport@yamazen.com

NATIONAL SUPPORT AND TECHNICAL CENTERS:

Chicago ♦ Milwaukee ♦ Indianapolis ♦ Cleveland ♦ Cincinnati

Detroit ♦ Hartford ♦ Knoxville ♦ Los Angeles ♦ Atlanta

Dallas ♦ Phoenix ♦ Fort Myers ♦ Philadelphia



MACHINERY



TOOLING



AUTOMATION



brother
Matsura

Nidec
TAKISAWA

MEASURING EQUIPMENT



Mitutoyo



WORLD LEADER IN METROLOGY

Innovative Precision Measurement

Solutions: CMMs, Form, Roundness, Vision and Surface, Inspection Calibration Services

HEXAGON



INDUSTRY LEADING TECHNOLOGY CMMs

- ➔ Laser Tracker Systems
- ➔ 3d Laser Scanners
- ➔ Portable Measuring Arms
- ➔ Machine Tool Measurement
- ➔ Profile Surface Measurement

LNI
LYNDEX-NIKKEN



LN ELBO CONTROLLI

World Class Vision Tool Presetters

- ➔ Flexible Features
- ➔ Granite Construction
- ➔ Powerful Software

BIG
BIG DAISHOWA



SPERONI VISION TOOL PRESETTERS

World Class Precision and Quality

Large range of models available

HAIMER
Quality Wins.



MODULAR BALANCING TECHNOLOGY

- ➔ Tool holder Dynamic Balancing Machine
- ➔ Precision Balancing for Enhanced Performance

KP
KOMA PRECISION
THE KEY TO PERFORMANCE



KOMA PRECISION TOOL PRESETTERS

- ➔ Vision Accuracy and Performance
- ➔ Flexible Configurations Available
- ➔ Large Range of Models
- ➔ Easy to Use Powerful Software

RENISHAW
apply innovation™



INDUSTRY LEADING TECHNOLOGY

Spindle Probes
Tool Setters Contact / Contact-less Measuring Solutions

BLUM



GERMAN PRECISION TECHNOLOGY

Spindle Probes

Tool Setters Contact / Contact-less Measuring Solutions



PRODUCTION OD GRINDING



- ➔ In Process Gages
- ➔ Tool Setting
- ➔ Length Measurement Systems
- ➔ Gap Elimination

SES
DYNAMIC BALANCE SYSTEM

PRODUCTION OD GRINDING

- ➔ Dynamic Wheel Balancing Systems



YAMAZEN INC.

111 Northwest Point Boulevard
Elk Grove Village, IL 60007

800-228-2969

toolingsupport@yamazen.com

NATIONAL SUPPORT AND TECHNICAL CENTERS:

Chicago ♦ Milwaukee ♦ Indianapolis ♦ Cleveland ♦ Cincinnati

Detroit ♦ Hartford ♦ Knoxville ♦ Los Angeles ♦ Atlanta

Dallas ♦ Phoenix ♦ Fort Myers ♦ Philadelphia



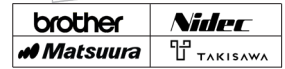
MACHINERY



TOOLING



AUTOMATION



WORKHOLDING



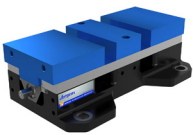
PRODUCTION READY MADE IN USA



- ➔ Low Profile, Bodies Built From Hardened Steel
 - ➔ Jaws feature serrations and dovetail grooves
 - ➔ Various Sizes and Configurations
- Tombstone Packages Available*



MADE IN USA



- ➔ Workholding for Milling
- ➔ Dual Station and Self Centering Vises
- ➔ Modular Clamp Systems
- ➔ Quick-loc Clamping Systems
- ➔ Ball Loc Clamping Systems
- ➔ Zero Point Clamping Systems



MADE IN USA



- ➔ Quick-Grip CNC Collect Chucks
- ➔ Expanding Arbors
- ➔ Collet Fixtures



PRODUCTION READY MADE IN THE USA



- ➔ Multi-vise Fixture Plates locate on top of the
- ➔ PAWS Hydraulic Base Unit
- ➔ Ideal for Vertical CNC production milling applications or pallet switching
- ➔ Designed for quick changeovers



PRODUCTION READY MADE IN THE USA



- ➔ Single and Dual Station CNC Machines Vises
- ➔ Machinable Quick-Change
- ➔ Soft Jaws
- ➔ Quick-Change Fixturing Solutions



HIGH PRECISION MADE IN THE USA



- ➔ Precision Air Chucks
- ➔ Balancing Chucks
- ➔ Precision Collet Chucks
- ➔ Diaphragm Chucks
- ➔ Special Application Workholding



PRODUCTION READY



- ➔ Enhanced Gripping Accuracy
- ➔ Next Generation Design
- ➔ Large Range of Workholding Solutions



LN & HOWA POWER CHUCKS FOR TURNING



- ➔ 4" to 15" Manual and Power Self Centering or Independent Jaw Draw Back
- ➔ 2 to 4 Jaw



GERMAN PRECISION



- ➔ 5th Axis Vises
- ➔ Centering Vises for Blanks, Contours and Finishes Pieces
- ➔ Quick Change Modular Workholding Solutions



MADE IN USA, MADE FOR MILLING



- ➔ Tombstone
- ➔ Angle Plates
- ➔ Modular Vises
- ➔ Cast Sections
- ➔ Customizable Workholding & Clamping Solutions

YAMAZEN INC.

111 Northwest Point Boulevard
Elk Grove Village, IL 60007
800-228-2969
toolingsupport@yamazen.com

NATIONAL SUPPORT AND TECHNICAL CENTERS:
Chicago ♦ Milwaukee ♦ Indianapolis ♦ Cleveland ♦ Cincinnati
Detroit ♦ Hartford ♦ Knoxville ♦ Los Angeles ♦ Atlanta
Dallas ♦ Phoenix ♦ Fort Myers ♦ Philadelphia